

# IntelliGen Machine Monitoring

Source-right IntelliGen platform is a state of the art, easy to deploy solution for Small and medium enterprises with discrete manufacturing.

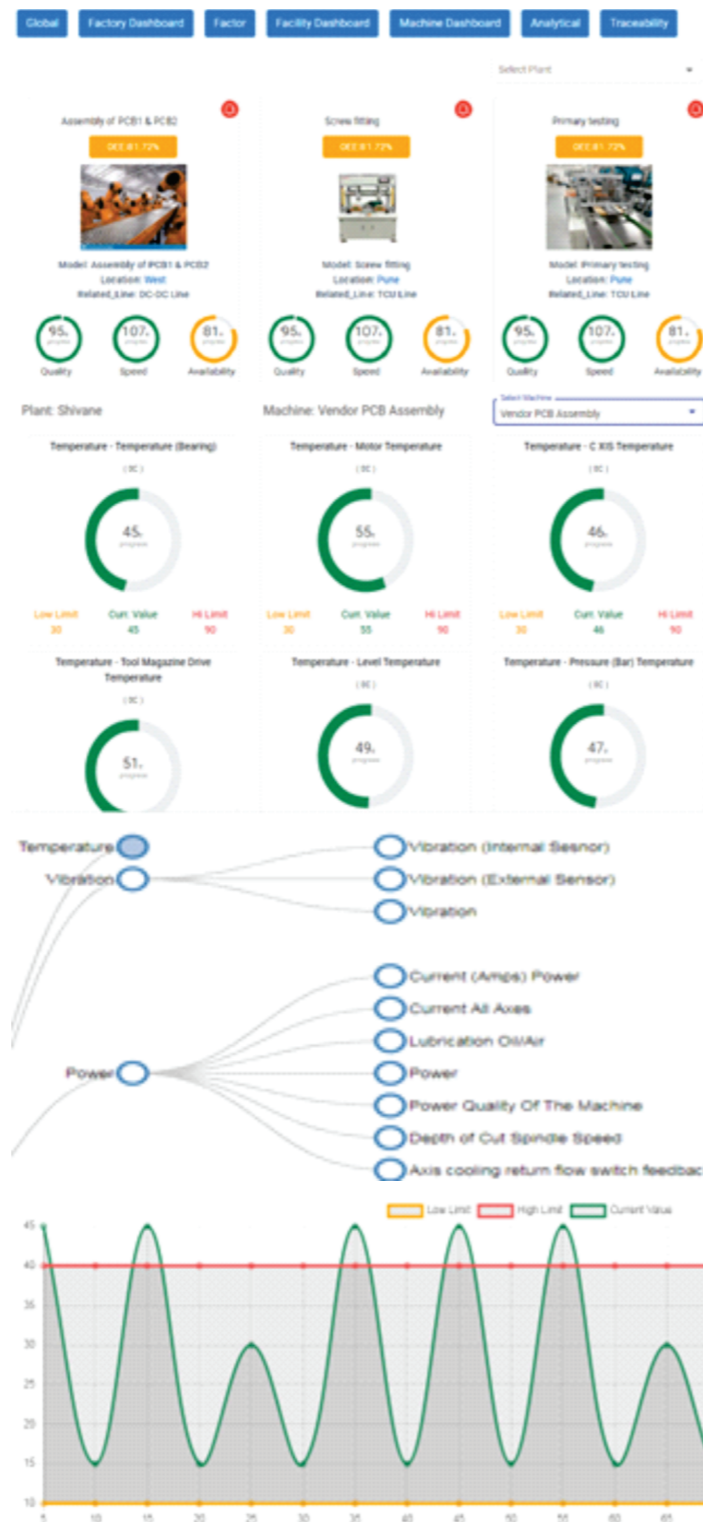
It provides centralized dashboarding for **MAN – MACHINE – METHODOLOGY – MATERIAL**

## Features

- Facility view – across multiple geographies, locations, manufacturing lines and equipment
- Condition monitoring of equipment
- Remote configuration of equipment parameters
- Alerts / Alarms on threshold crossing of parameters
- Customized reporting: Rejection ratio, Inventory turnover ratio, customer complaints, Plan Vs Actual, Failure analysis

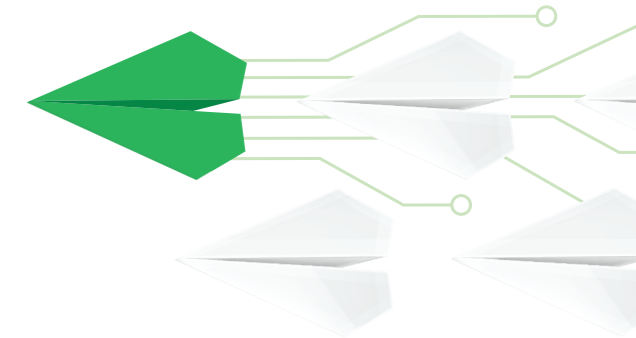
## Highlights

- Increasing Operational Efficiency
- Traceability and compliance
- Reduce down time, Anomaly detection , Failure analysis
- Easy to deploy solution with support for on cloud / on premise
- Support for multiple equipment, PLC and controllers of different makes
- Ability of Integration with MES and existing subsystems

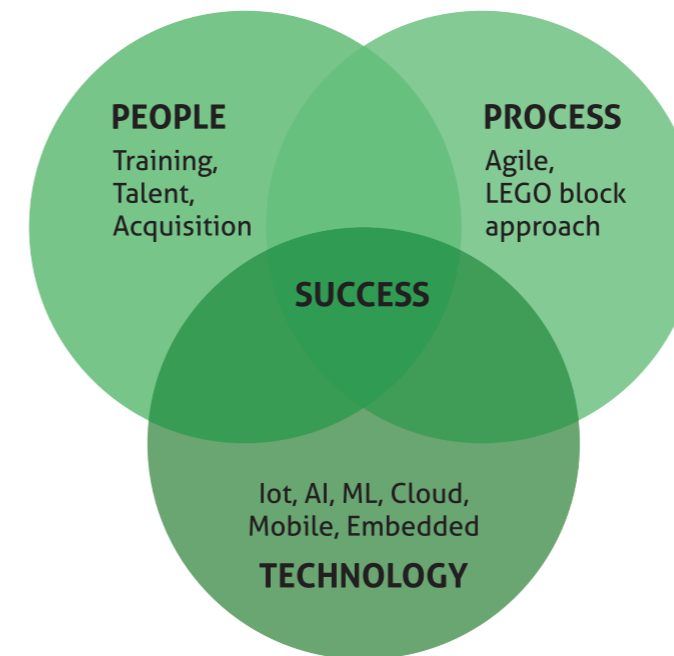


# source-right

PEOPLE | PROCESS | TECHNOLOGY



Source-right is an engineering services and solutions company focused on accelerating business outcomes by enabling people, processes and technology.



- Increase profit
- Optimize operational efficiency
- Cost reduction
- Broaden the offerings
- Enhance user experience
- Scale with agility

## SERVICES

- Engineering design and build
- Maintenance and support
- Workforce enablement
- Accelerator driven services

## SOLUTIONS

- Employee, Pallet, Asset tracking
- Computer Vision – Mfg. Quality
- Remote monitoring
- Retail, e-Commerce



## Contact Us

Madison, WI, USA | Pune, MH, India  
 Email: [inquiries@source-right.com](mailto:inquiries@source-right.com) | Phone: +1 (608) 770-4707  
 Website: [www.source-right.com](http://www.source-right.com)

[www.source-right.com](http://www.source-right.com)

Madison, WI, USA | Pune, MH, INDIA

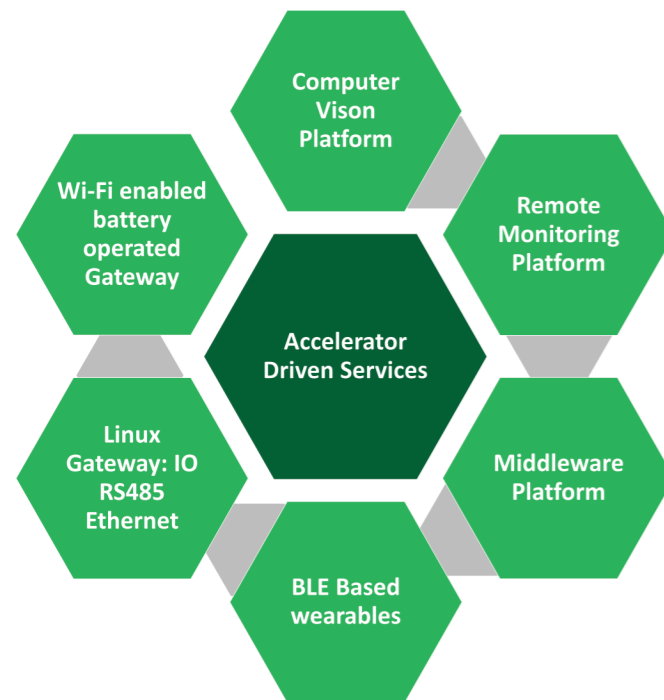
# Engineering Services

## DESIGN | BUILD | DEPLOY | MAINTAIN | SUPPORT

- Embedded hardware and software products
- Mobile, Web and Cloud applications
- e-commerce solutions

### How is it different?

Accelerator driven services | LEGO Block approach  
Lower CAPEX & OPEX | Faster GTM



**Wearables**



**Retail**



**Renewable energy**



**Digital Marketing**



**Utilities**



**Telematics**



**IoT**



**Automotive**

# Smart Factory Suite

Source-right's **Smart Factory Suite** is an exciting mix of products and accelerator driven solutions that helps resolve real world challenges and have better business outcomes.

## Pallet Tracking System

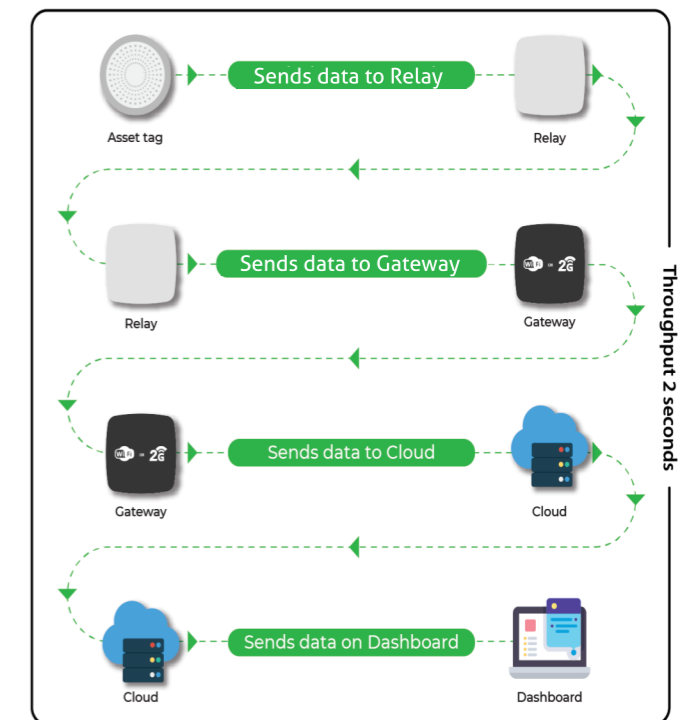


RTLS based wireless, battery operated, plug and play system

### Highlights

- Realtime asset & inventory management
- Just-in-Time inventory
- Production planning

## How solution works?



FCC certified hardware

## Workforce enablement

### Upscale

- Quick onboarding and functional teams
- Elasticity or Core / Flex for the required skills

### Upskill

- Experience based training
- Classroom training

### Why

- Agility and cost reduction
- In-house SME expertise in IT and OT
- Unbiased perspective
- Out-of-the-box thinking
- Hands-on experience with multiple technologies and organizations

### Case Studies

- **Wearable:** Gesture recognition, Safety gear, Wellness monitoring.
- **Remote monitoring:** Wireless sensors, Utility Equipment monitoring
- **Computer vision:** Anomaly detection, Quality assurance

## Computer vision – Anomaly detection | AI | ML solutions | Edge analytics

- Quality inspection of pre-production, in process and post production
- Test coverage of 100%
- Automate monotonous work
- Reduce manual errors
- Reduce wastage
- POE based cameras with Edge analytics

